

Sustainability Services

Comprehensive support for strategy development, implementation and reporting



Prism Engineering is a Metro Vancouver-based engineering firm specializing in sustainability and energy management services.

Prism has experience in developing and implementing sustainability strategies and programs for over 90 organizations in the commercial, government and industrial sectors, including BC's Health Authorities, post-secondary institutions, schools districts, municipalities, utilities and businesses as well as the Provincial and Federal Government.

Our interdisciplinary team brings a depth of experience working with organizations across sectors to apply the latest science and practices that lead to true integration of sustainability policies and performance.

Based on practical experience and creative problem solving, Prism's comprehensive approach to sustainability planning and reporting is tailored to fit the unique challenges and needs of our clients.

We support clients in:

1. **Sustainability Strategy Design**
2. **Stakeholder Engagement + Consultation**
3. **Performance Management Systems**
4. **Program and Plan Evaluation**
5. **Strategic Communications**
6. **Impact Reporting**

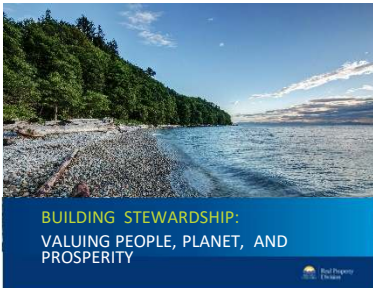


Recent projects



PUBLIC SERVICES & PROCUREMENT CANADA **Implementing Sustainability Strategies | 2019-2021**

Prism worked with the PSPC Real Property Services (RPS) team to integrate the department's new Sustainable Development and Environmental Strategy (SDES) into RPS operations. Informed by change management and user-centered design strategies as well as an iterative and collaborative process with stakeholders, Prism created a Sustainability Handbook for RPS employees that helps them understand how to integrate the SDES sustainability targets into their daily practices. Prism also developed a Communications Plan and suite of materials to engage RPS employees in the sustainability transformation underway at PSPC.



BC MINISTRY OF CITIZEN SERVICES **Developing a Framework for Sustainability Reporting | 2018**

Prism helped the Real Property Division (RPD) to develop their vision and strategy for sustainability reporting, and identify meaningful sustainability metrics. Prism utilized the Global Reporting Initiative's (GRI) methodology as a framework for developing RPD's Sustainability Report while working with the Corporate Sustainability Team to consult with stakeholders and identify the most relevant indicators and data streams. Published in 2018, the strategy provides RPD with a structure for tracking performance and reporting on programs, projects and initiatives on an annual basis.



SURREY SCHOOLS **Creating Opportunities for Community Dialogue | 2017-2019**

Prism supported Surrey Schools (School District 36) in developing their Sustainability Strategy, which included conducting a comprehensive review of sustainability strategies in school districts and facilitating planning sessions with key stakeholders to gather input throughout the development process. This became an opportunity to engage the larger school district in a dialogue about what sustainability meant to the organization and the role students, teachers and staff can play in achieving sustainability outcomes. Prism helped Surrey Schools design and host an interactive open house to engage the community in the development of the strategy.



BC INSTITUTE OF TECHNOLOGY **Enabling Broad Stakeholder Input | 2019**

BCIT recently launched their Sustainability Vision, which outlines a set of nine strategies that leverage the Institute's strengths and outline a clear path for progress. Prism supported BCIT's Institute Sustainability Team in developing and facilitating the community engagement process that gathered input from BCIT's diverse stakeholders. The work included designing and hosting a series of six campus open houses and conducting several online surveys. Prism also produced a report analyzing the results from the coordinated engagement efforts to further inform updates to the Vision and set of strategies. A total of close to 800 individuals shared ideas, input and inspiration to help develop BCIT's new Sustainability Vision.



Head Office
Tel: 604.298.4858
Int. Tel: 1.888.724.1715
#320 - 3605 Gilmore Way
Burnaby, BC, V5G 4X5
info@prismengineering.com

From design to implementation, we provide energy management, electrical and mechanical engineering, utility monitoring and sustainability consulting to help our clients create a greener, more energy efficient world.

www.prismengineering.com